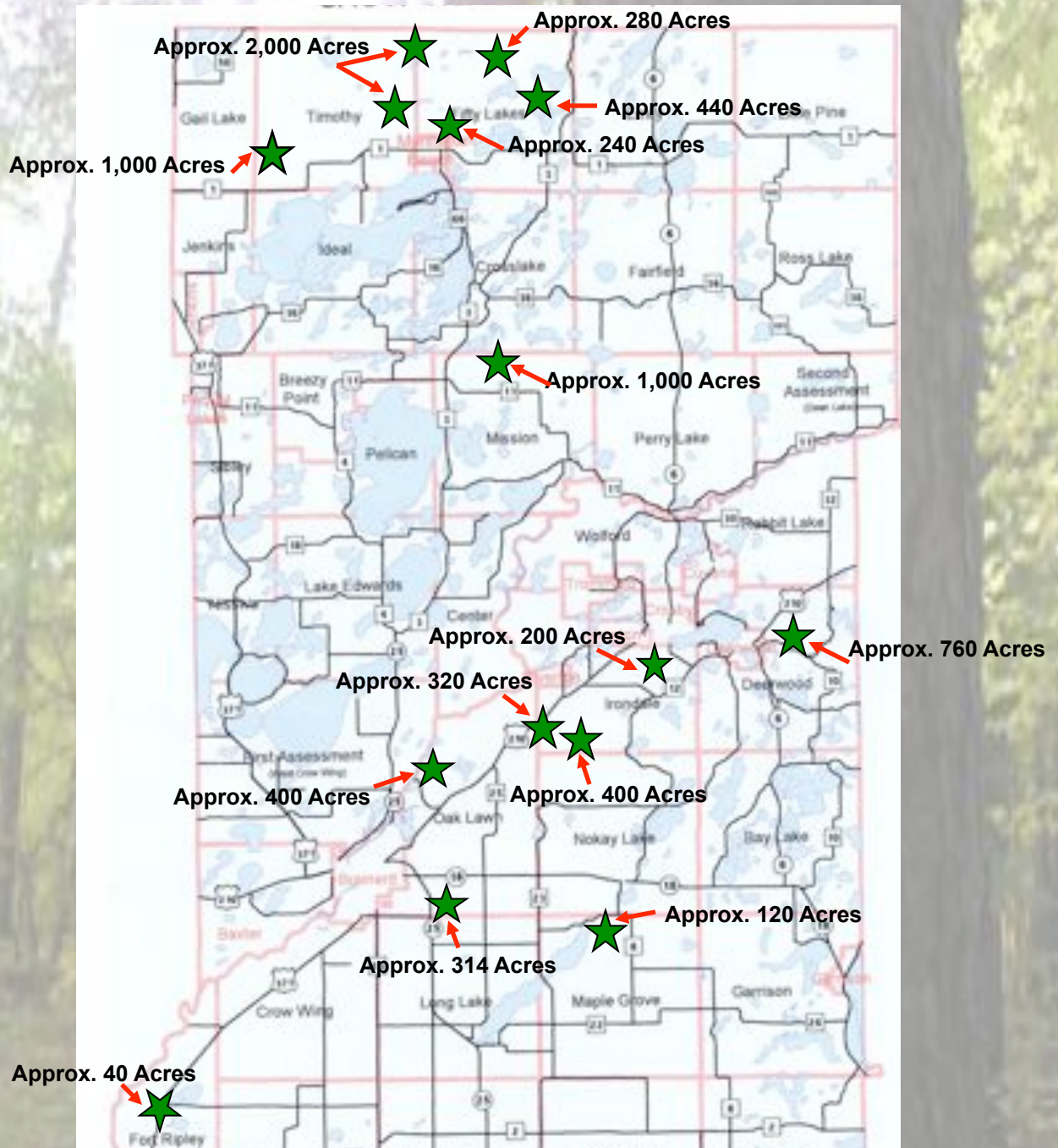




Non-Motorized Summer Trails Summary

Presented on 6/29/2010
by Bryan Pike,
Natural Resource Manager

Non-Motorized Areas Managed by Crow Wing County



Approx. 7,514 Acres of Non-Motorized Areas on County Administered Tax-Forfeited Lands

- Timothy Township – Cranberry Bog Trail and Thompson Creek Trail
- Timothy/Gail Lake Township – Blueberry Bog Trail
- Fifty Lakes – White Pine Trail, Rock Creek Trail, and Pine Ridge Trail
- Mission Township – Scrub Oak Trail
- Irondale Township – Rice Lake Trail, Wolf Lake Trail
- Oak Lawn Township – Poor Farm, French Rapids Trail, Wolf Lake Trail - North
- Deerwood Township – Larson Lake Trail
- Maple Grove – Sec. 4 - HCVF
- Fort Ripley – Fort Ripley Trail

Directory of Non-Motorized Areas on County Managed Public Lands

Cities/ Townships	Trail Name	Total Length	Approximate Acres
Timothy/Gail Township	Blueberry Bog Trail	8.7 miles	1000
Timothy Township	Thompson Creek/Cranberry Bog Trails	4.2 miles	2000
City of Fifty Lakes	Pine Ridge Trail	4.1 miles	440
	Rock Creek Trail	1.8 miles	280
	White Pine Trail	3.0 miles	240
Mission	Scrub Oak Trail	6.1 miles	1000
Irondale	Rice Lake Trail	1.6 miles	200
Irondale/Nokay	Wolf Lake Trail (Ski Area)	6.6 miles	400
Deerwood	Larson Lake Trail (Ski Area)	7.5 miles	760
Oaklawn	Poor Farm County/State Cooperative Wildlife Management Area	2.9 miles	314
	Wolf Lake Trail - North	2.0 miles	320
	French Rapids Trail (Ski Area)	5.8 miles	400
Maple Grove	Sec. 4 - HCVF	2.0 miles	120
Fort Ripley	Fort Ripley Trail	1.5 miles	40
		Total Miles 57.8	Total Approximate Acres 7,514

**Fort Ripley Non-Motorized Area
Fort Ripley Township - Section 22
Approx. Acres = 40**



0 140 280 560 Feet

TOTAL TRAIL MILES - 1.5
Entire trail is mowed.



6/28/2010

LEGEND

-  Gated Trailhead
-  Non-motorized Trail - Mowed
-  Private Land

Crow Wing County Coordinates (projection) ArcGIS 9.2

At Gate:
Lat. 46 11' 35.85"
Long. 94 22' 13.29"

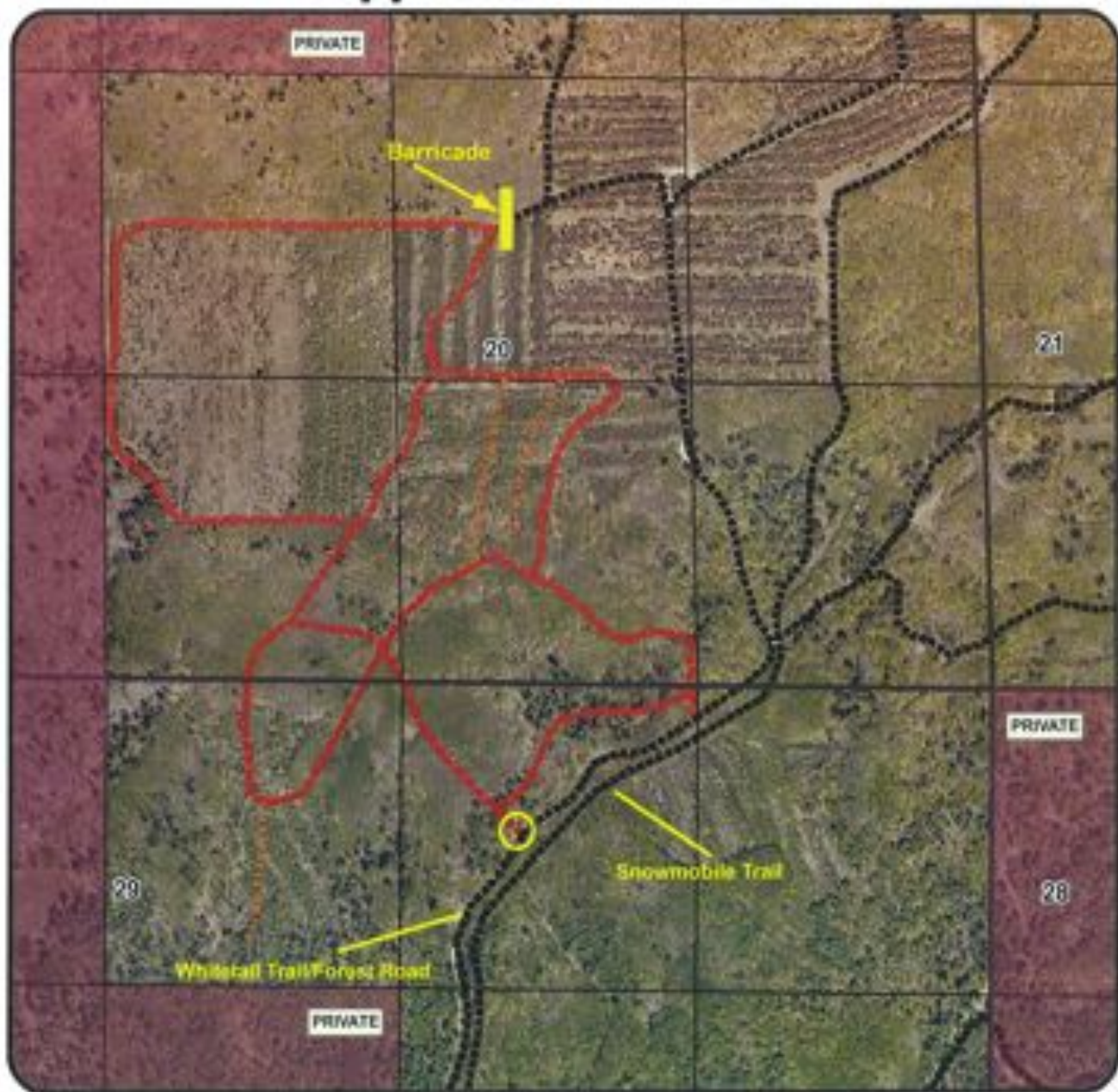
1 inch equals 267 feet

Crow Wing County
Public Land Management
322 Laurel Street, Suite 12
Brainerd, MN 56401

218-824-1115

(for non-legal, reference use only)

White Pine Non-Motorized Area City of Fifty Lakes Approx. Acres = 240



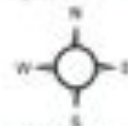
0 360 720 1,440 Feet

1 inch equals 645 feet

Mowed Trail Miles - 2.6
Unmowed Trail Miles - 0.4
TOTAL TRAIL MILES - 3.0

- Legend**
- Gated Trailhead
 - Side/other trail
 - Non-motorized trail - Unmowed
 - Non-motorized trail - Mowed
 - Private land

At Gate:
Lat. 46° 44' 43.23"
Long. 94° 07' 19.06"



Crow Wing County
Public Land Management
322 Laurel Street, Suite 12
Brainerd, MN 56401

218-824-1115

6/28/2010

Crow Wing County Coordinates (projection) ArcGIS 9.2

(for non-legal, reference use only)

Larson Lake Non-Motorized Area

Deerwood Township

Approx. Acres = 760



0 650 1,300 2,600 Feet

LEGEND

1 inch equals 1,289 feet

Mowed Trail Miles - 7.1
 Unmowed Trail Miles - 0.2
 Seasonal Mowed Trail Miles - 0.2

TOTAL TRAIL MILES = 7.5

- Gated Trailhead
- Gate
- Non-motorized Trail - Mowed
- Non-motorized Trail - Unmowed
- Seasonal Non-motorized Trail - Mowed
- Side/Other Trail
- Wetland Area
- Private Land

Crow Wing County
 Public Land Management
 322 Laurel Street, Suite 12
 Brainerd, MN 56401
 218-824-1115

(for non-legal, reference use only)



6/28/2010

Crow Wing County Coordinates (projection) ArcGIS 9.2