



# **Non-Motorized Winter Trails Summary**

Presented on 7/27/2010  
by Kirk Titus,  
Land Services Supervisor –  
Public Land Management

# Non-Motorized Winter Areas on County Administered Tax-Forfeited Lands



**Approx. 1,680 Acres of Non-Motorized Winter Areas  
on County Administered Tax-Forfeited Lands**

Irondale Township – Wolf Lake Trail

Oak Lawn Township – French Rapids Trail

Deerwood Township – Larson Lake Trail

Maple Grove – Sec. 4 – Al Steif keeps the trail in usable condition for non-groomed skiing or snowshoeing

# Directory of Non-Motorized Winter Areas on County Managed Public Lands

<b>Cities/ Townships</b>	<b>Trail Name</b>	<b>Total Length</b>	<b>Approximate Acres</b>
Irondale/Nokay	Wolf Lake Trail (Ski Area)	6.6 miles	400
Deerwood	Larson Lake Trail (Ski Area)	7.5 miles	760
Oaklawn	French Rapids Trail (Ski Area)	5.8 miles	400
Maple Grove	Sec. 4 - HCVF	2.0 miles	120
		Total Miles 21.9	Total Approximate Acres 1,680

# French Rapids Non-Motorized Area Oak Lawn Township - Sections 4 & 5 Approx. Acres = 400



0 0.15 0.3 0.6 Miles

**TOTAL TRAIL LENGTH  
5.8 MILES**

6/28/2010

Crow Wing County Coordinates (projection) ArcGIS 9.2



## Legend

- Gated Trailhead
- Trailer Launch
- French Rapids Trail
- Snowmobile Trail
- Township Boundary
- Section Boundary
- Parcel Boundary
- Private Boundary

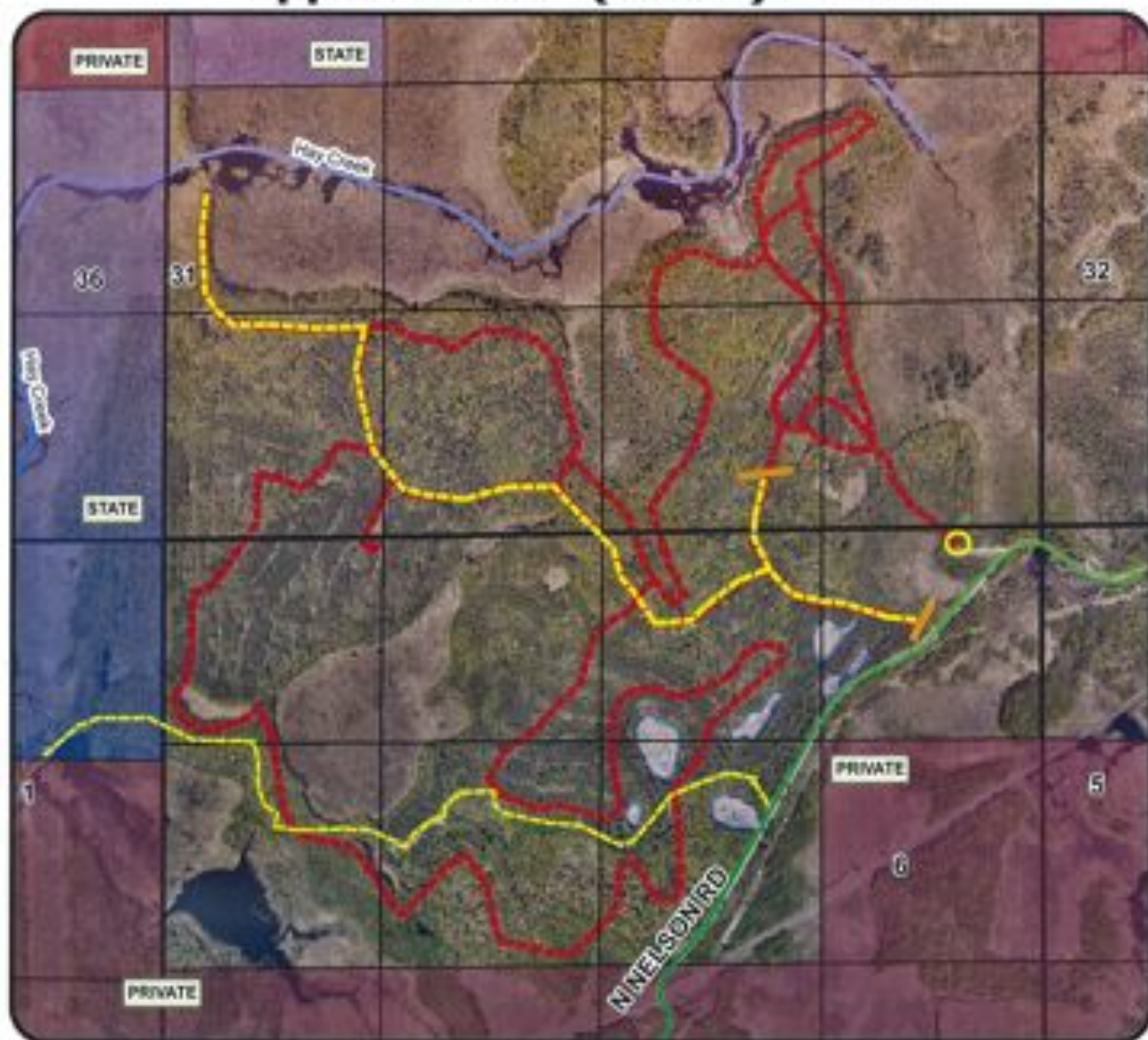
1 inch equals 0.299319 miles

Crow Wing County  
Public Land Management  
322 Laurel Street, Suite 12  
Brainerd, MN 56401

218-824-1115

(for non-legal, reference use only)

# Wolf Lake Non-Motorized Area Nokay Lake & Irondale Townships Approx. Acres (South) = 400



0 495 990 1,980 Feet

1 inch equals 892 feet

Mowed Trail Miles - 5.4
Seasonal Mowed Trail Miles - 1.2
<b>TOTAL TRAIL MILES - 6.6</b>

### LEGEND

- Gated Trailhead
- Gates
- Non-motorized Trail - Mowed
- Motorized Trail - Summer/Fall Only
- Streams and Rivers
- State Land
- Private Land
- Wetland Area

Crow Wing County  
Public Land Management  
322 Laurel Street, Suite 12  
Brainerd, MN 56401

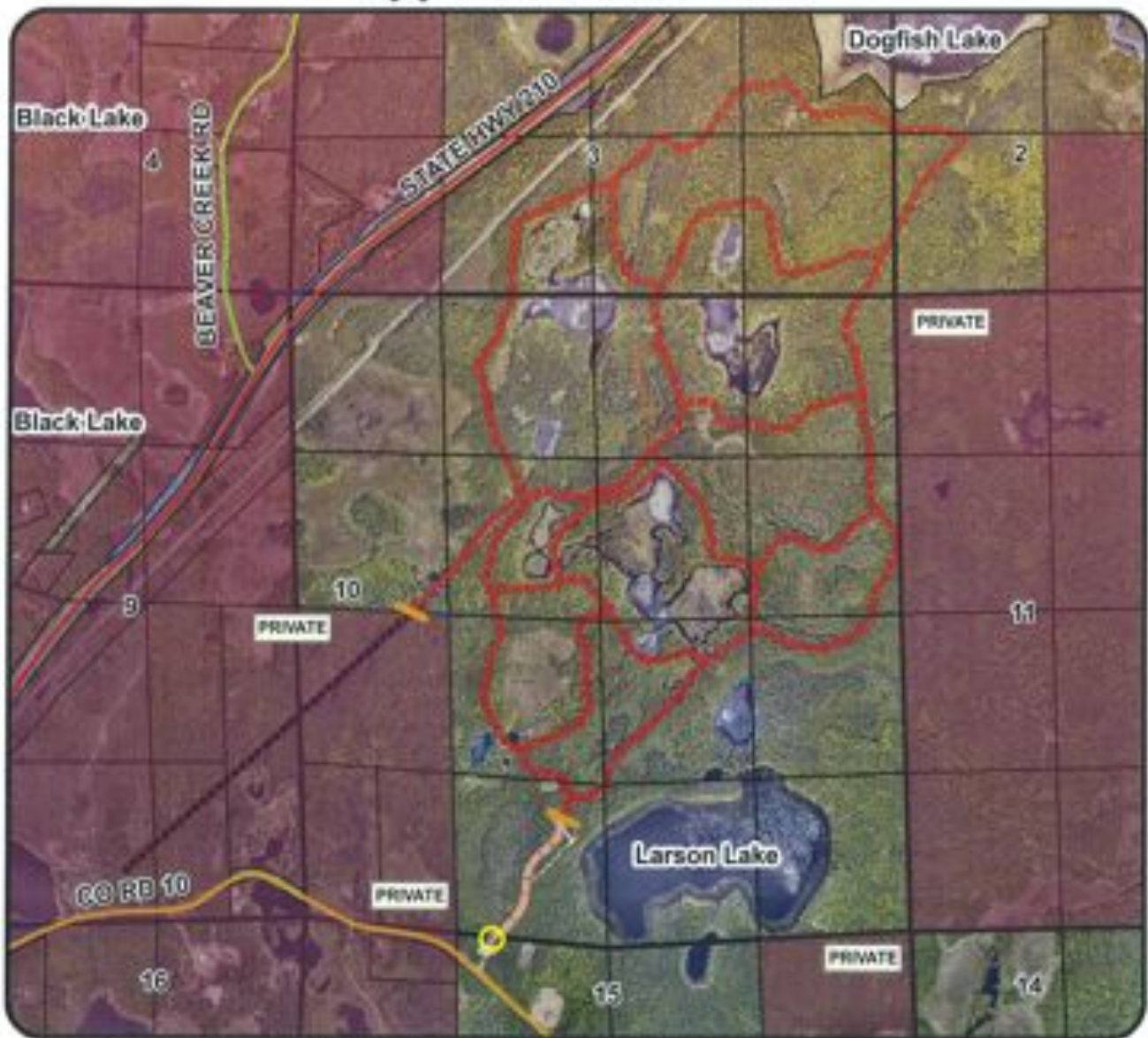
218-624-1115



# Larson Lake Non-Motorized Area

## Deerwood Township

Approx. Acres = 760



0 650 1,300 2,600 Feet

### LEGEND

1 inch equals 1,289 feet

Mowed Trail Miles - 7.1  
 Unmowed Trail Miles - 0.2  
 Seasonal Mowed Trail Miles - 0.2

---

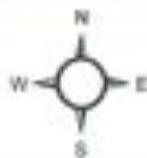
**TOTAL TRAIL MILES = 7.5**

- Gated Trailhead
- Gate
- Non-motorized Trail - Mowed
- Non-motorized Trail - Unmowed
- Seasonal Non-motorized Trail - Mowed
- Side/Other Trail
- Wetland Area
- Private Land

Crow Wing County  
 Public Land Management  
 322 Laurel Street, Suite 12  
 Brainerd, MN 56401

218-824-1115

(for non-legal, reference use only)



6/28/2010

Crow Wing County Coordinates (projection) ArcGIS 9.2