



U.S. Fish and Wildlife Service

---

# Northern Long-Eared Bat



*Photo Courtesy of NPS/Steven Thomas*

**Bat Friendly Forestry Workshop**

**Aitkin, MN**

**October 30, 2014**



U.S. Fish and Wildlife Service

---

# Agenda

- Listing timeline
- Northern long-eared bat biology
- White-nose Syndrome as Primary Threat
- Making a Final Decision
- Discussion



U.S. Fish and Wildlife Service

# Timeline: Proposal to List Northern Long-eared Bat

January 2010:  
Petitioned to list

October 2013:  
Proposed listing  
published;  
60-day comment  
period (extended  
to 90 days)

June 2014:  
6-month  
extension on final  
decision;  
comment period  
re-opened

August 29, 2014:  
Comment period  
closed

April 2, 2015:  
Final  
determination  
expected



U.S. Fish and Wildlife Service

---

# Species Description

- Medium sized bat (5-8 g)
- Long ears and tragus
- Forage in upland forest
- Generalists: Found in a variety of types of trees



Northern Long Eared Bat  
Al Hicks, NY Dept of Environmental  
Conservation





U.S. Fish and Wildlife Service

---

# Northern Long-eared Bat Habitat Needs

## *Summer*

- Roosts and forages in forested habitat

## *Fall*

- Known to migrate 50+ miles from summer habitat to hibernacula

## *Winter*

- Hibernates in caves, mines, tunnels and similar structures





U.S. Fish and Wildlife Service

---

## Bats Are Important

- Bats are a vital part of a healthy environment
- Bats eat insects that are pests to crops and humans
- Research suggests bats save the agriculture industry more than \$3 billion in pest control per year.
- Study of bats has led to advancements in science and medicine.



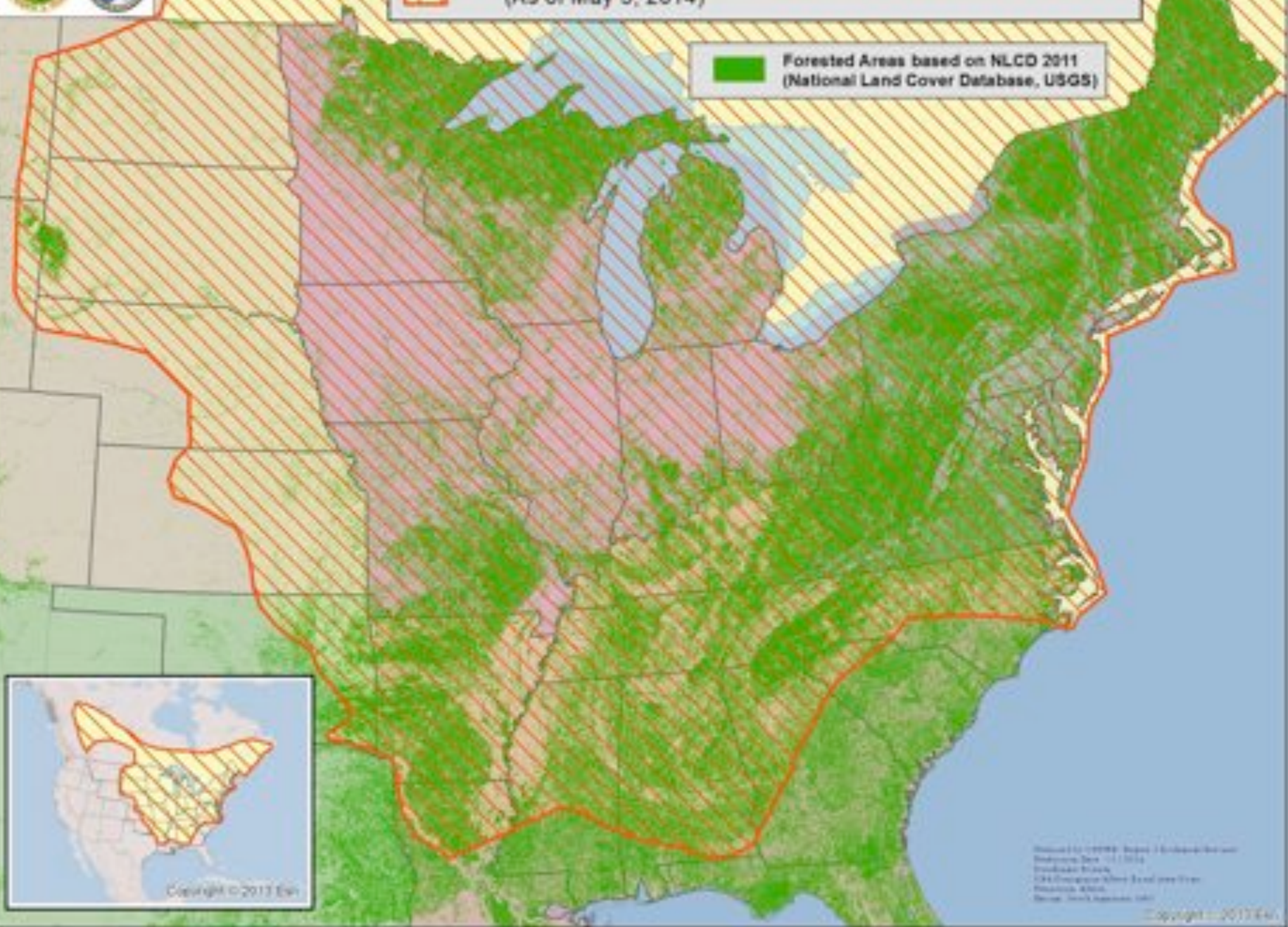


### Northern Long-Eared Bat Approximate Range

(As of May 5, 2014)



Forested Areas based on NLCD 2011  
(National Land Cover Database, USGS)



Copyright © 2013 EBN

Prepared by: USFWS - Bureau of Land Management  
Recovery Team - 11/1/2014  
Produced by: EBN  
12400 Longhorn Drive, Suite 1000  
Houston, TX 77057  
Phone: 281-485-4000

Copyright © 2013 EBN





U.S. Fish and Wildlife Service

---

# White-nose Syndrome is Primary Threat

- Infectious disease responsible for deaths of millions of bats in eastern North America
- In some Northeast caves, northern long-eared bat has declined by up to 99%

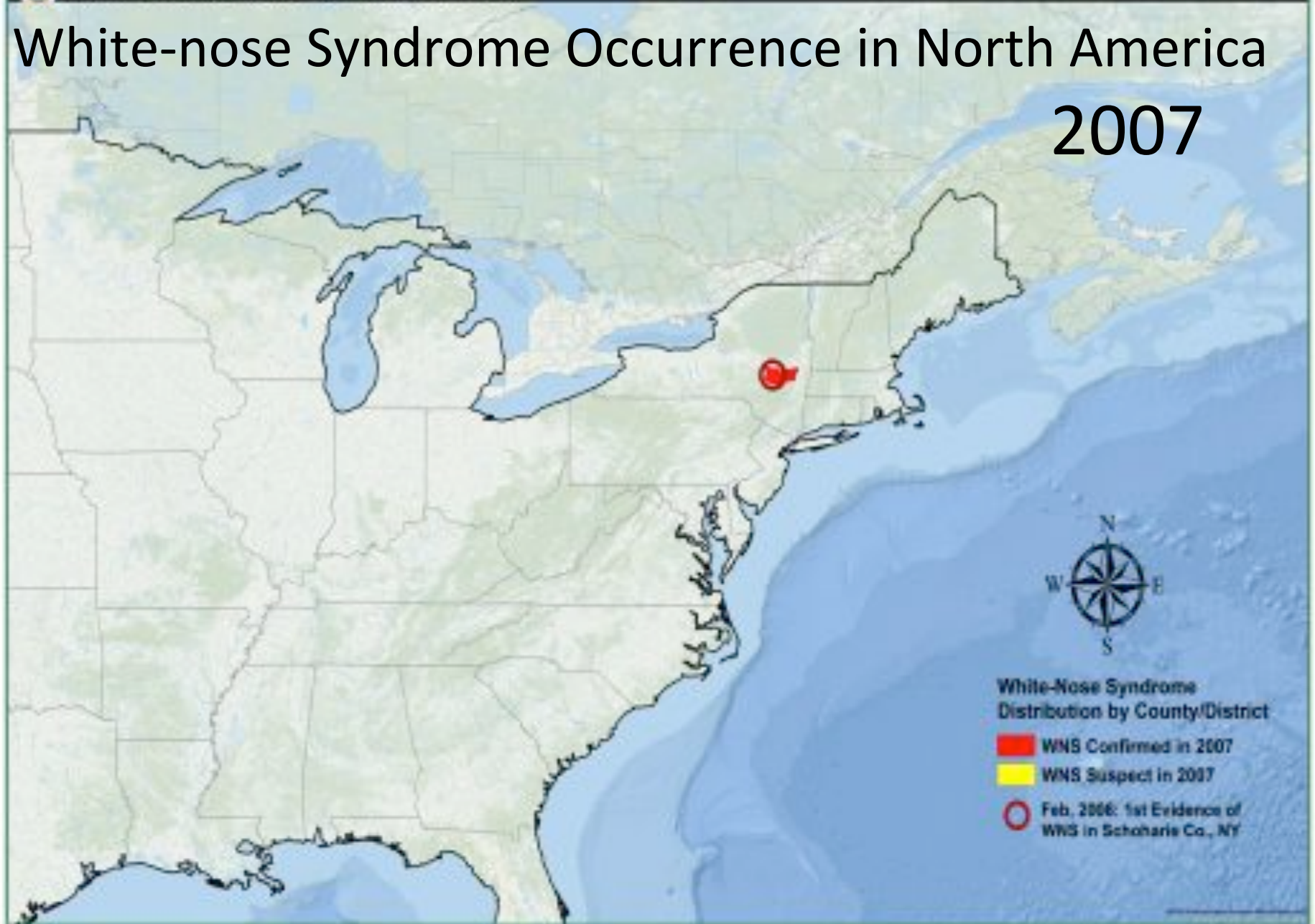




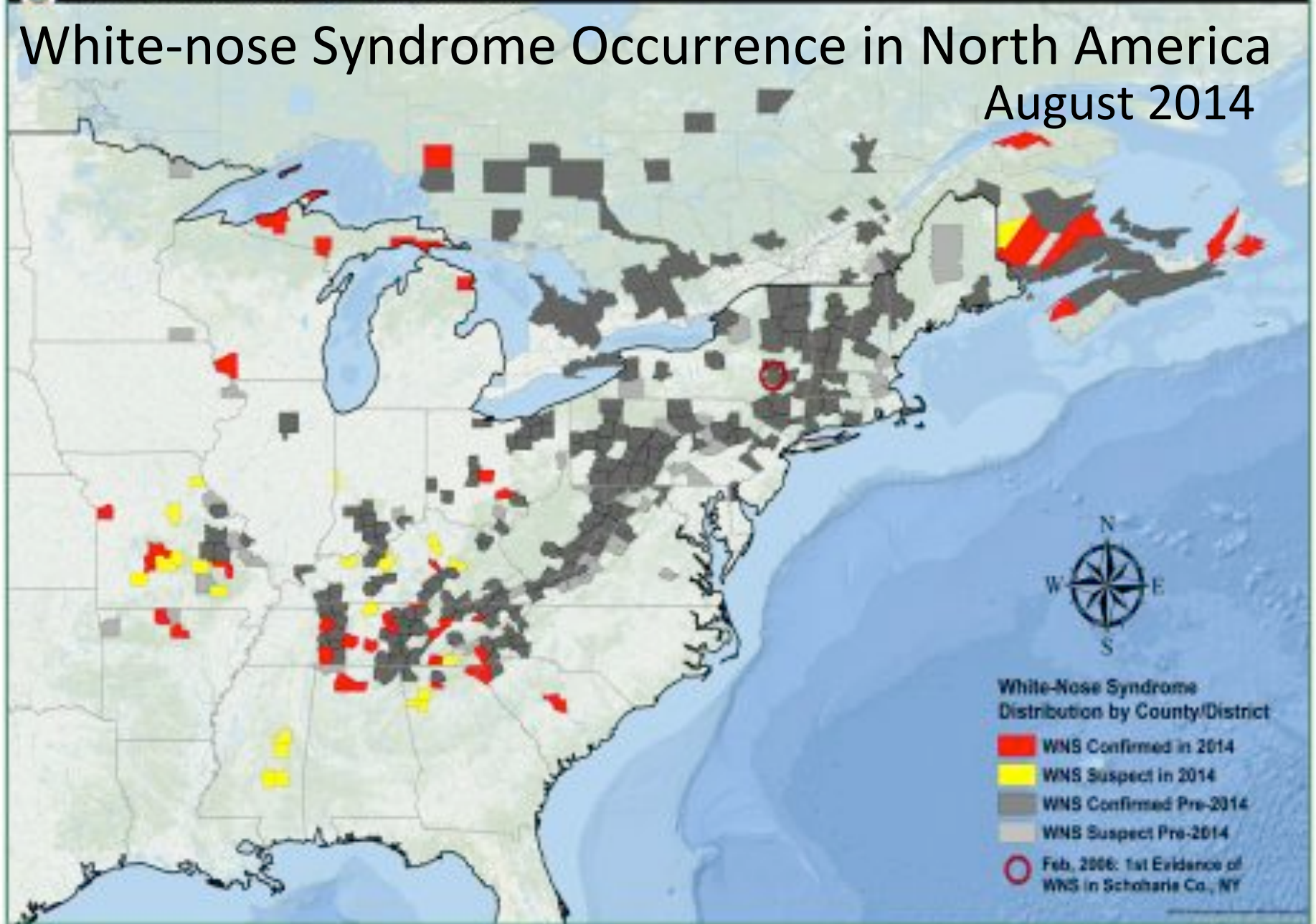


U.S. Fish & Wildlife Service

# White-nose Syndrome Occurrence in North America 2007



# White-nose Syndrome Occurrence in North America August 2014







U.S. Fish and Wildlife Service

---

# Working Together to Help the Northern Long-eared Bat

- White-nose Syndrome National Team
- Developing Best Management Practices
- Research on:
  - forest management
  - bat migration
  - population trends
- Information and education



*Photo courtesy Steven Taylor/University of*





U.S. Fish and Wildlife Service

---

# Making a Final Decision

- Must be based “solely on the basis of the best scientific and commercial data available”
- Will fully consider public comments
  - Received ~100,000 comments from 2 comment periods
- Third comment period in November or December
- Final decision expected April 2, 2015



U.S. Fish and Wildlife Service

---

## ESA Protections

- Effective Upon Final Listing
- Take = harass, harm, pursue, hunt, shoot, wound, kill, trap, capture, collect
- Potential Exemptions
  - 4d Rule – only for threatened species; ‘necessary and advisable’
  - permits (section 10; HCP) – **FWS \$750K granted to MI, MN, & WI to develop HCP**
  - consultation (section 7 – federal actions only)



U.S. Fish and Wildlife Service

---

## Next Steps

- Coordination
- Complete analysis
- Final agency decision
- Conservation needs and considerations
- Keep talking and listening





U.S. Fish and Wildlife Service

---

## **More Information:**

**<http://www.fws.gov/midwest/endangered/mammals/nlba/>**

## **Points of Contact**

Twin Cities Field Office

Pete Fasbender or Lisa Mandell

4101 American Boulevard East

Bloomington, MN 55425

612-725-3548

[Peter\\_fasbender@fws.gov](mailto:Peter_fasbender@fws.gov)

[Lisa\\_mandell@fws.gov](mailto:Lisa_mandell@fws.gov)