

TOWNSHIPS CONTAINING NORTHERN LONG-EARED BAT ROOST TREES AND/OR HIBERNACULA

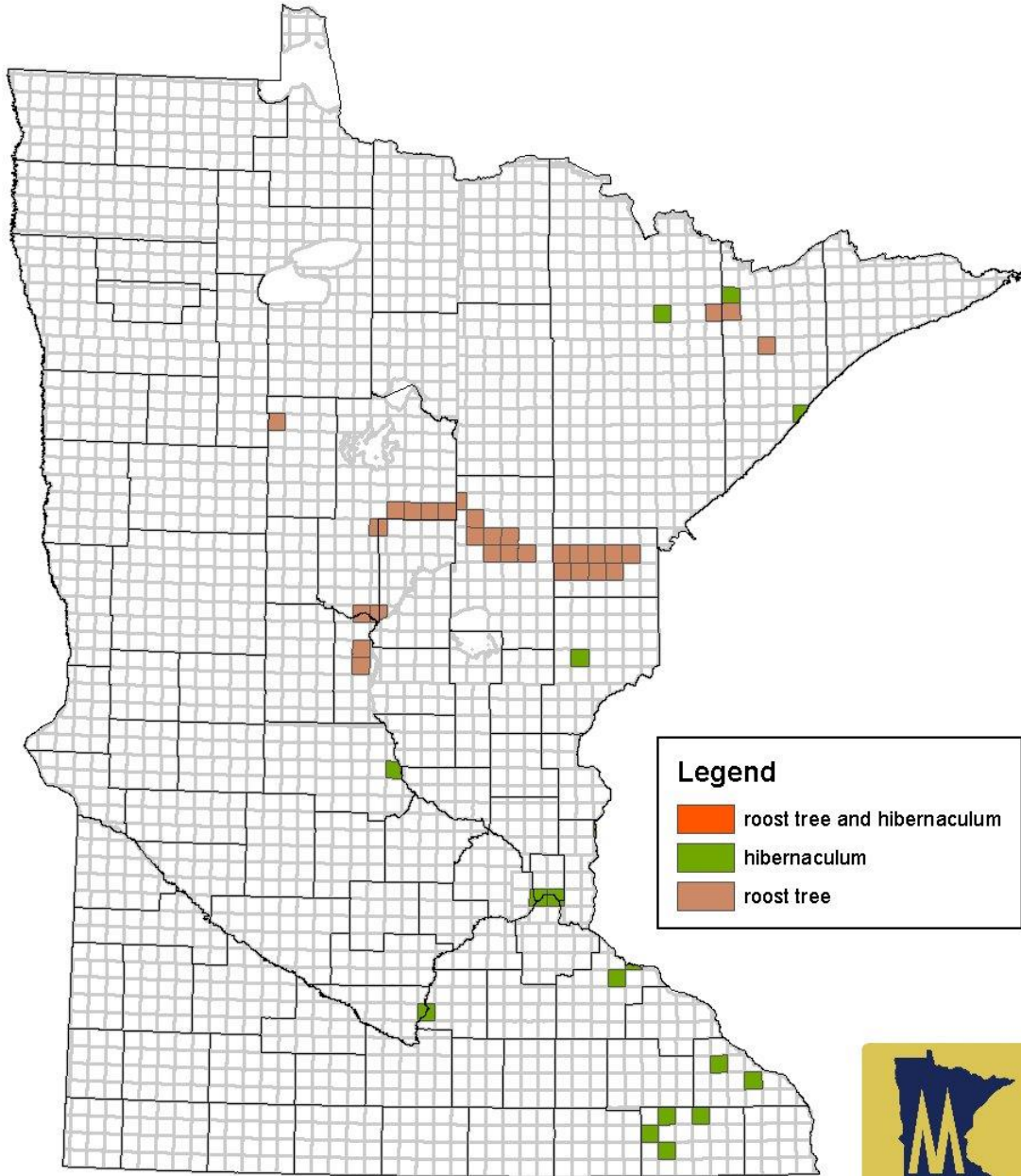
Minnesota DNR/U.S. Fish and Wildlife Service June 6, 2015

- U.S. Fish and Wildlife Service rules restrict activity around northern long-eared bat roost trees and hibernacula. See <http://www.fws.gov/midwest/endangered/mammals/nlba/index.html> for more information on the northern long-eared bat and its protection.
- The townships listed below contain one or more northern long-eared bat roost trees and/or hibernacula
- A roost tree may be identified to a specific tree or to a general location (e.g. within ½ mile)
- **If a project involving tree removal is not within a listed township**, no further action is required
- **If a project involving tree removal is planned within an identified township**, you may:
 - Submit a data request to the DNR for a printed copy of precise locational information (see <http://www.dnr.state.mn.us/nhnrp/nhis.html#datarequest>)
 - Apply to the DNR for a data license to obtain a digital copy of precise locational information (see <http://www.dnr.state.mn.us/nhnrp/nhis.html#datarequest>)
 - Contact the USFWS to obtain detailed information and advice on how to proceed with your project (see contact information at the bottom)
 - Also contact USFWS if your project involves federal funding, a federal permit, or federal lands
- These data are current as of June 6, 2015. Updates of this information will be released twice annually on April 1 and October 1
- As of this date, there are 25 known hibernacula and 163 known roost trees in Minnesota

County	Township	Contains one or more Hibernaculum	Contains one or more Roost Tree
Aitkin	T139N R25W		X
Aitkin	T48N R23W		X
Aitkin	T48N R24W		X
Aitkin	T48N R25W		X
Aitkin	T49N R24W		X
Aitkin	T49N R25W		X
Aitkin	T49N R26W		X
Aitkin	T50N R26W		X
Aitkin	T51N R27W		X
Carlton	T47N R18W		X
Carlton	T47N R19W		X
Carlton	T47N R20W		X
Carlton	T47N R21W		X
Carlton	T48N R17W		X
Carlton	T48N R18W		X
Carlton	T48N R19W		X
Carlton	T48N R20W		X

Carlton	T48N R21W		X
Cass	T133N R29W		X
Cass	T139N R25W		X
Cass	T139N R26W		X
Cass	T139N R27W		X
Cass	T139N R28W		X
Cass	T51N R27W		X
Chisago	T32N R19W	X	
Crow Wing	T138N R29W		X
Fillmore	T102N R12W	X	
Fillmore	T103N R13W	X	
Fillmore	T104N R10W	X	
Fillmore	T104N R12W	X	
Goodhue	T112N R15W	X	
Goodhue	T113N R14W	X	
Hubbard	T144N R35W		X
Lake	T56N R7W	X	
Lake	T60N R9W		X
Lake	T62N R11W		X
Lake	T63N R11W	X	
Morrison	T130N R30W		X
Morrison	T131N R30W		X
Morrison	T133N R29W		X
Morrison	T133N R30W		X
Nicollet	T110N R26W	X	
Pine	T42N R20W	X	
Ramsey	T28N R22W	X	
Ramsey	T28N R23W	X	
Stearns	T124N R28W	X	
St. Louis	T62N R12W		X
St. Louis	T62N R15W	X	
Winona	T106N R7W	X	
Winona	T107N R9W	X	

Townships Containing Northern Long-eared Bat Roost Trees and/or Hibernacula



Legend

- roost tree and hibernaculum
- hibernaculum
- roost tree



For more information, contact:

Lisa Mandell, Deputy Field Supervisor
U.S. Fish and Wildlife Service
Twin Cities Ecological Services Field Office
4101 American Blvd E., Bloomington, MN 55425
lisa_mandell@fws.gov
612-725-3548

Rich Baker, Endangered Species Coordinator
Minnesota Department of Natural Resources
Division of Ecological and Water Resources
500 Lafayette Rd., St. Paul, MN 55155
richard.baker@state.mn.us
651-259-5073