

NUCFAC Accessible Urban Tree Inventory (AUTI)

WHAT IT IS:

The AUTI project brings a modern, mobile, map-oriented inventory system to a state's communities for little or no out-of-pocket cost. Using open data formats, the information can be combined into a state-wide system for aggregated data analysis and decision making.

WHY:

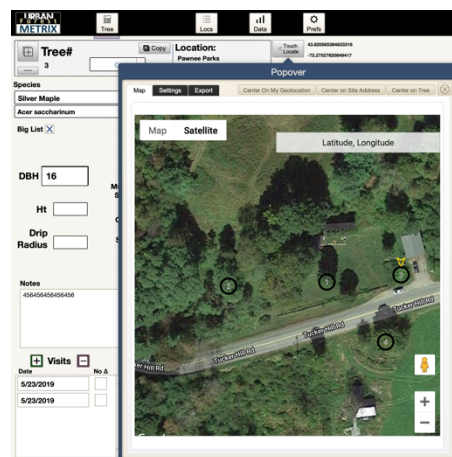
Costs of mobile tree inventory programs are beyond the budget of smaller communities, yet these systems are needed to access a modern level of usability and functionality. Without that, decisions are made without the best data.

BENEFITS OF PARTICIPATING IN PILOT:

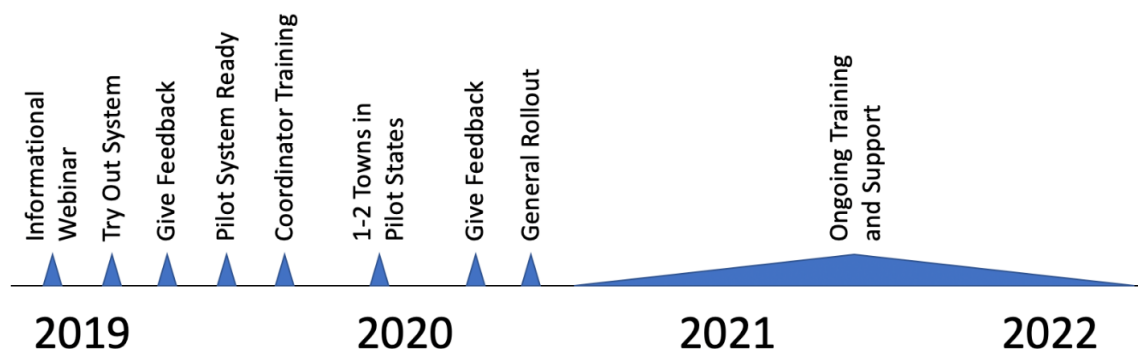
Funded by the National Urban Community Forestry Advisory Council, the project will operate for three years, further adapting an existing commercial database to common community forestry needs, rolling out the improved product to hundreds of communities across the participating states. States opting to help pilot the program will benefit by gaining a disproportionate quantity of the community licenses allotted to the project.

BENEFITS TO COMMUNITIES:

- Native mobile system allowing for iPad and iPhone use with full system functionality
- Simple and quick mapping, compatible with GIS systems but employing a simple, one-touch interface
- Simple reports
- Emergency mitigation planning support
- Data export to open file formats, allowing for data analysis in other programs, such as i-Tree



TIMELINE:



HOW CAN MY STATE PARTICIPATE?

Pilot Initial Feedback

- Attend webinar
- Try out program
- Provide feedback

Pilot Active

- Attend training in spring
- Identify initial communities
- Train community leads

Rollout stage

- Attend 2020 training
- Offer software to communities
- Train community leads

COMMON QUESTIONS:

- What do I need to participate?

In the initial feedback stage, you need only access to an iPad (an iPhone can work in a pinch). In 2020, rolling out to one or two pilot communities in your state, you would be expected to learn the program so as to be able to distribute it along with prepared training materials to communities. Coordinators will be collection points for feedback and support, backed by the software vendor, Urban Forest Metrix, for 2nd tier support. Communities will need a mobile device with which to conduct inventories.

- How does this work with GIS?

The system makes it easy to generate geolocations for trees, and easy to get those geolocations out of the system into an open format (KML), which may be imported freely into existing GIS solutions. It is deliberately not a network GIS database interacting with a live ESRI server, which has proven to be a high hurdle for smaller communities to pay for or learn how to use. Instead, it provides very simple geolocation functionality with intuitive map access.

- Is this a cloud application?

If desired by the state or by an individual community, a contract can be arranged for their data to be collected upward to a cloud-served version of the database. This benefits communities by allowing for multiple people to use it simultaneously. It benefits states in particular in that it allows for analysis across communities. By default, the databases resident on a device, whether that be a computer or tablet. This allows for the avoidance of cloud serving charges and to avoid a requirement of ubiquitous internet access.

- Benefits of joining the pilot program?

States joining the pilot program will be allotted an additional quantity of licenses that can be distributed to additional communities in their states.

- How will communities be supported with the software?

Participating states will distribute the software to communities they feel are ready. Training webinars and in-person sessions at national events will be held by AUTI staff to train coordinators. AUTI will also provide a complete, step-by-step manual and a set of online instructional videos.

- What happens if a state cannot distribute all of the allotted licenses to communities?

Any unused licenses will be made available to other participating states that have additional communities wishing to use the system.

- Does this replace i-Tree

No, the AUTI system complements i-Tree by providing a modern, mobile method of entering in tree data. A spreadsheet file export can be created in AUTI for import into i-Tree so that the various “modules” of i-Tree can be employed for analysis.

The work upon which this publication is based was funded in whole or in part through a grant awarded by the National Urban and Community Forestry Advisory Council, USDA, Forest Service, State & Private Forestry, Cooperative Forestry.

In accordance with Federal law and U.S. Department of Agriculture policy, this institution is prohibited from discriminating on the basis of race, color, national origin, sex, age, or disability. (Not all prohibited bases apply to all programs.) To file a complaint of discrimination, write USDA, Director, Office of Civil Rights, Room 326-W, Whitten Building, 1400 Independence Avenue, SW, Washington, DC 20250-9410 or call (202) 720-5964 (voice and TDD). USDA is an equal opportunity provider and employer.